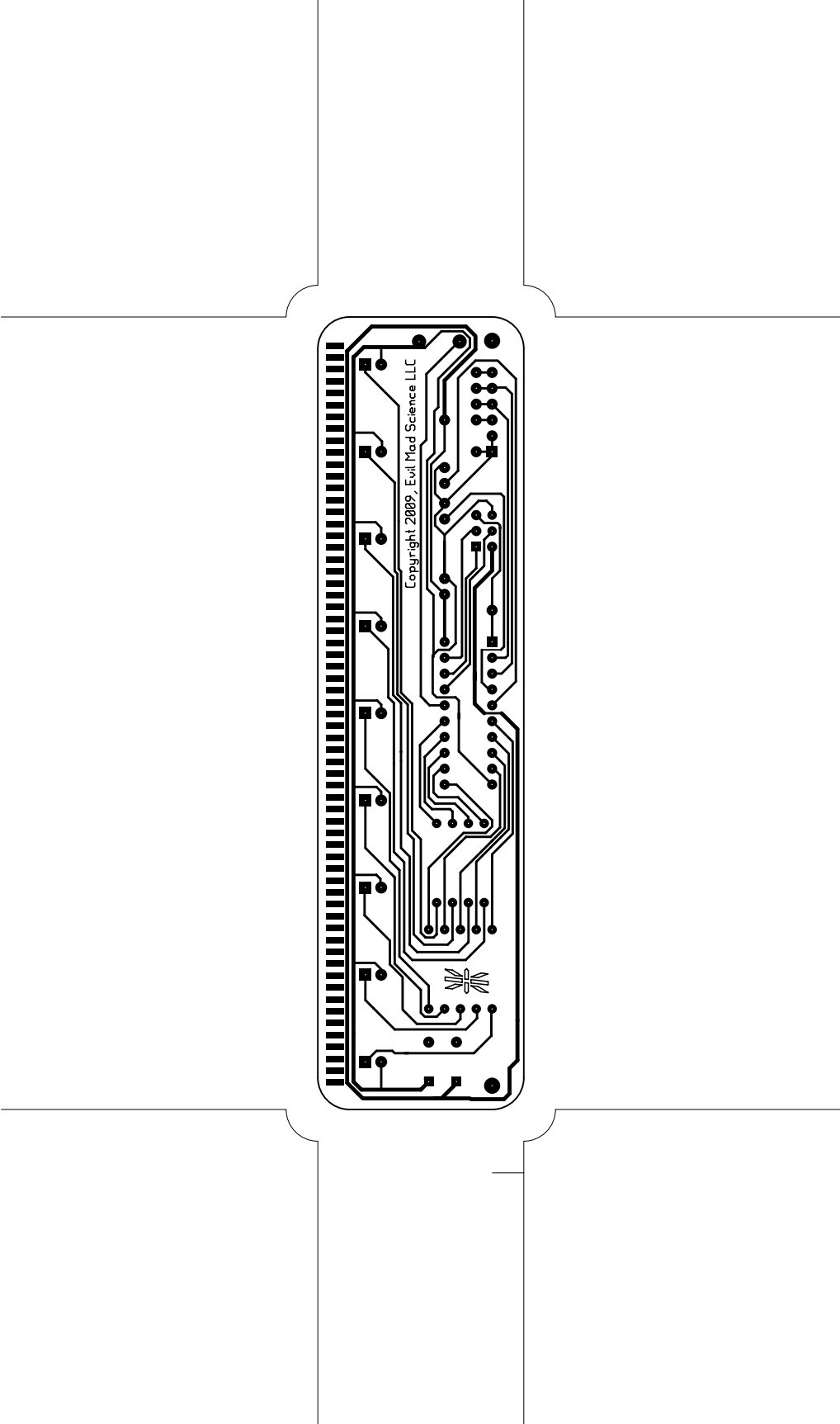
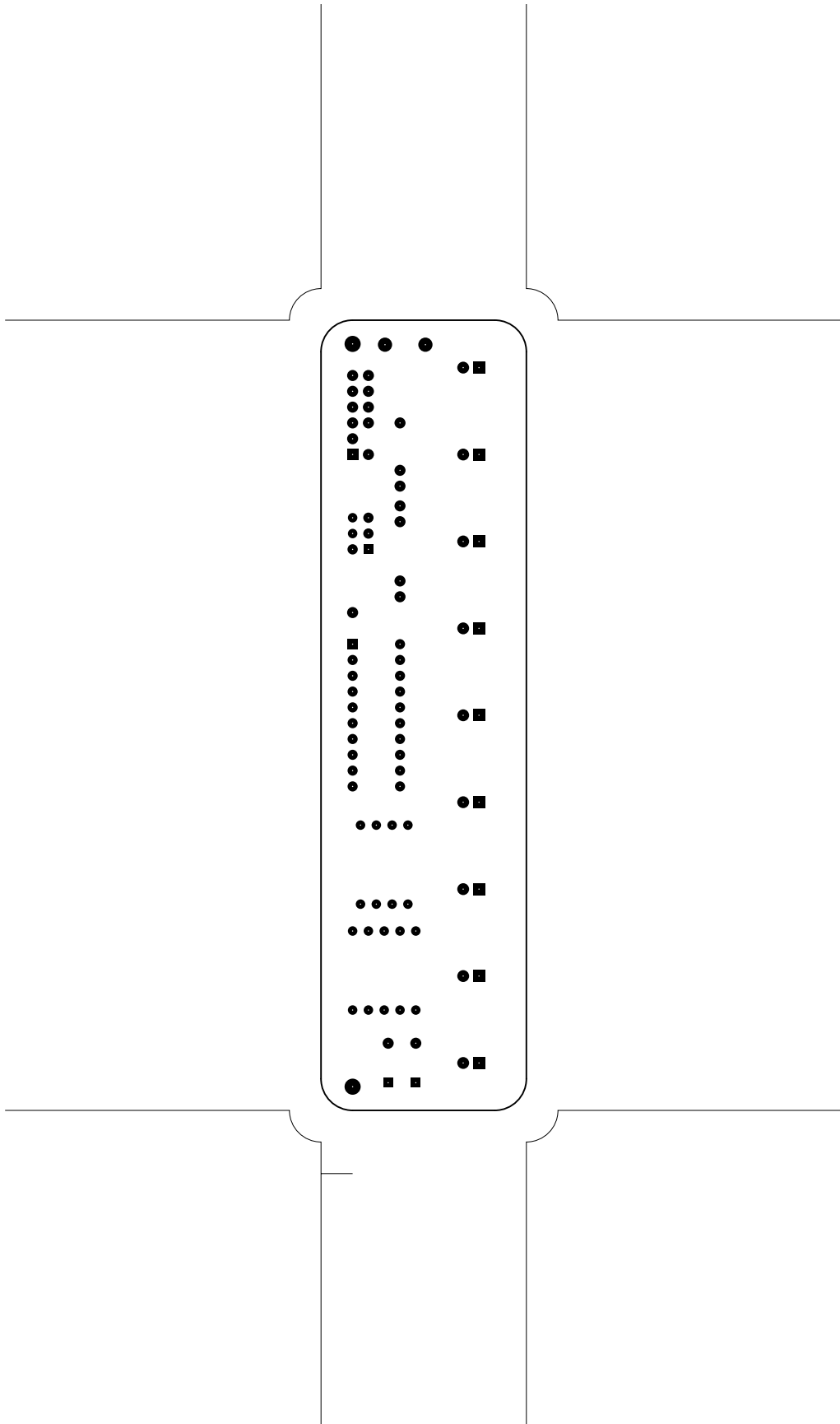
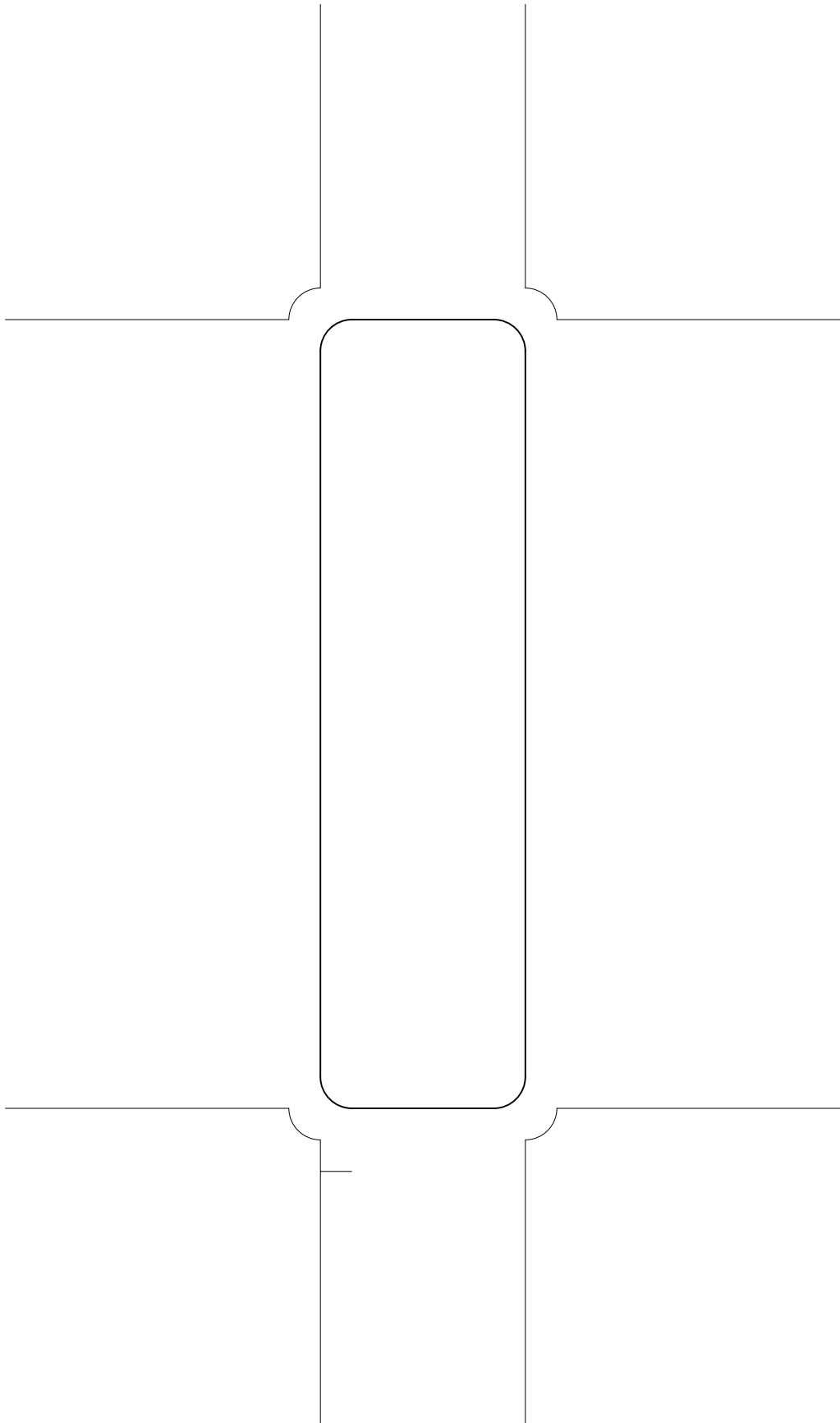
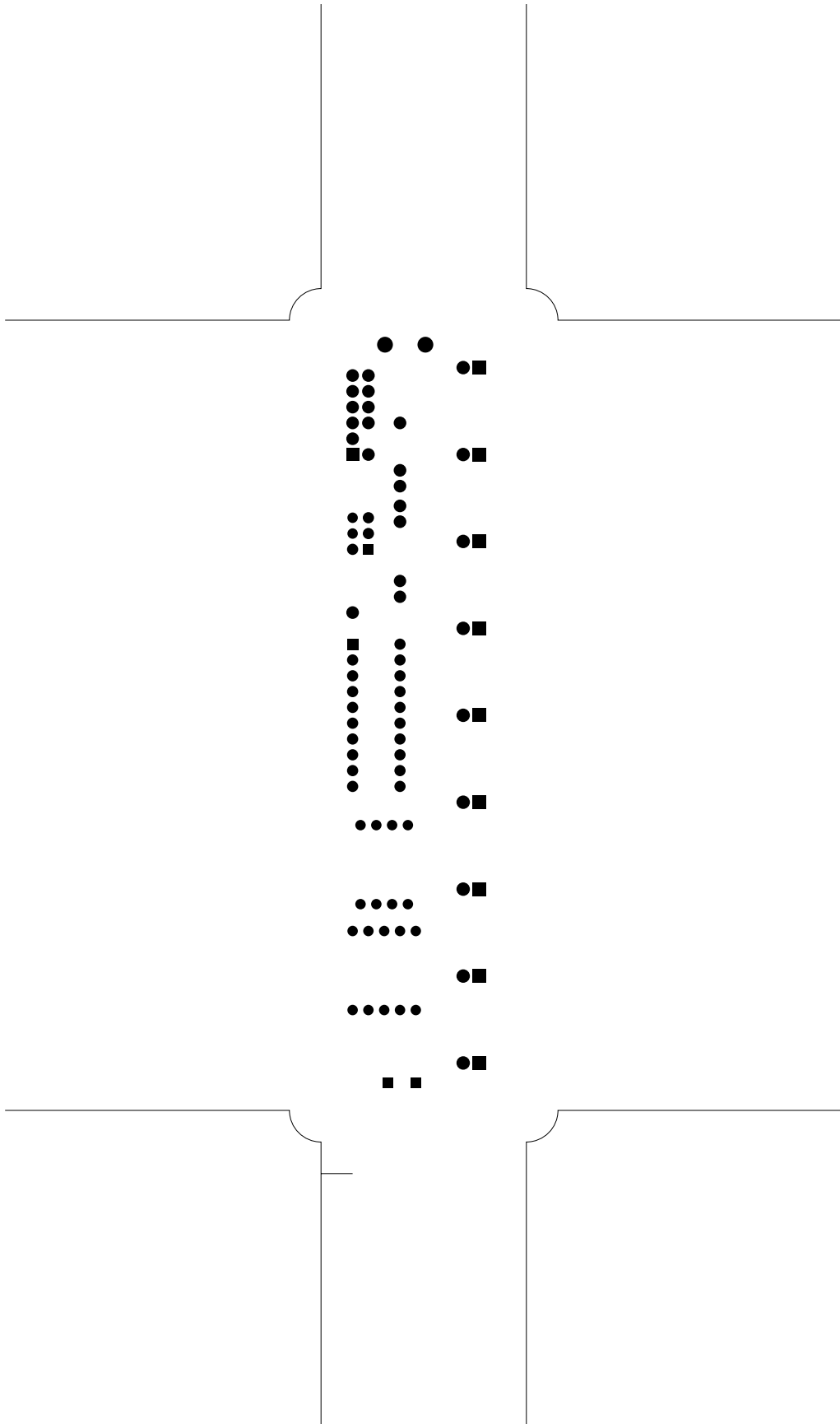


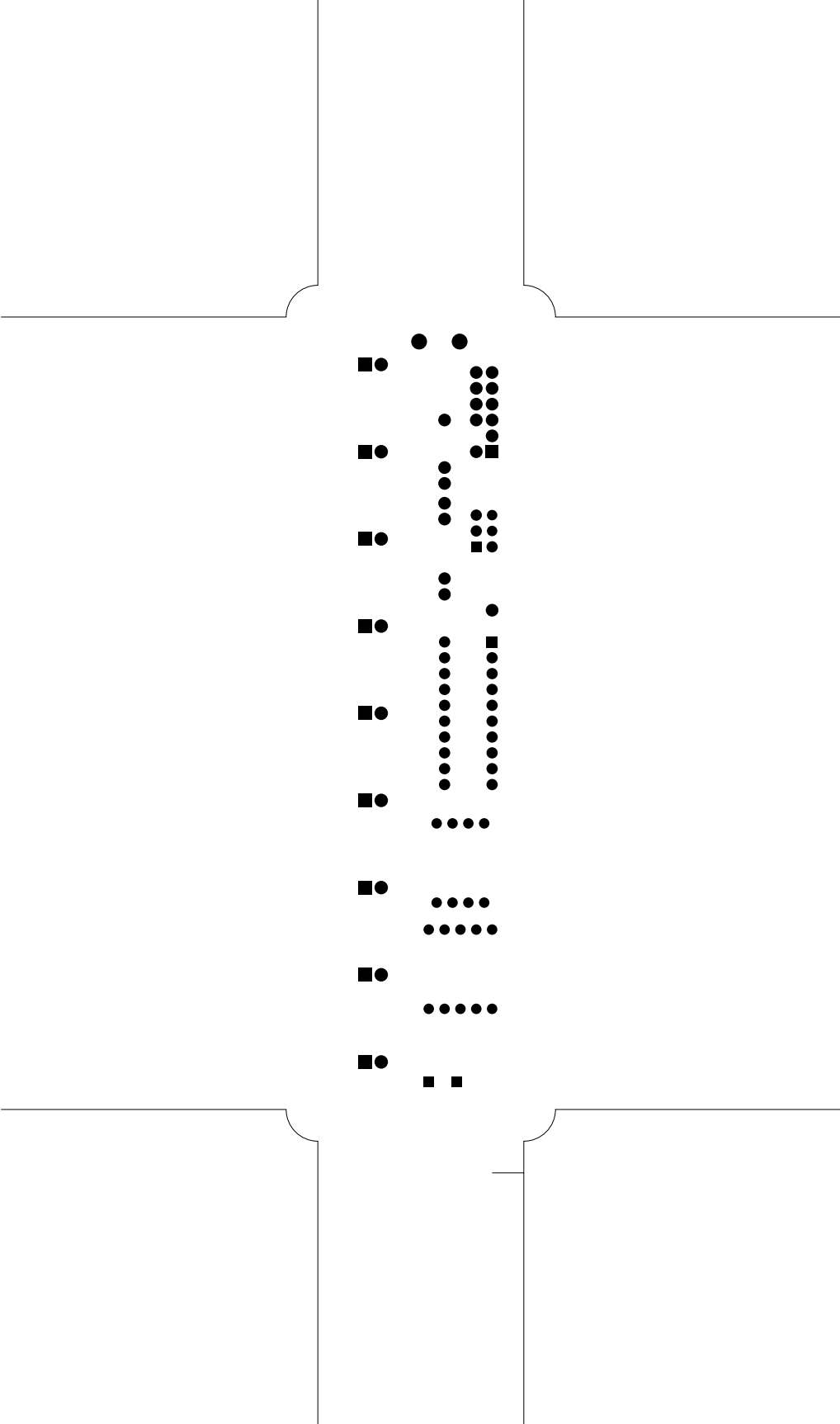
2. solder
3. component
4. outline
5. componentmask
6. soldermask
7. plated-drill
8. topsilk
9. bottomsilk
10. topassembly
11. bottomassembly
12. fab

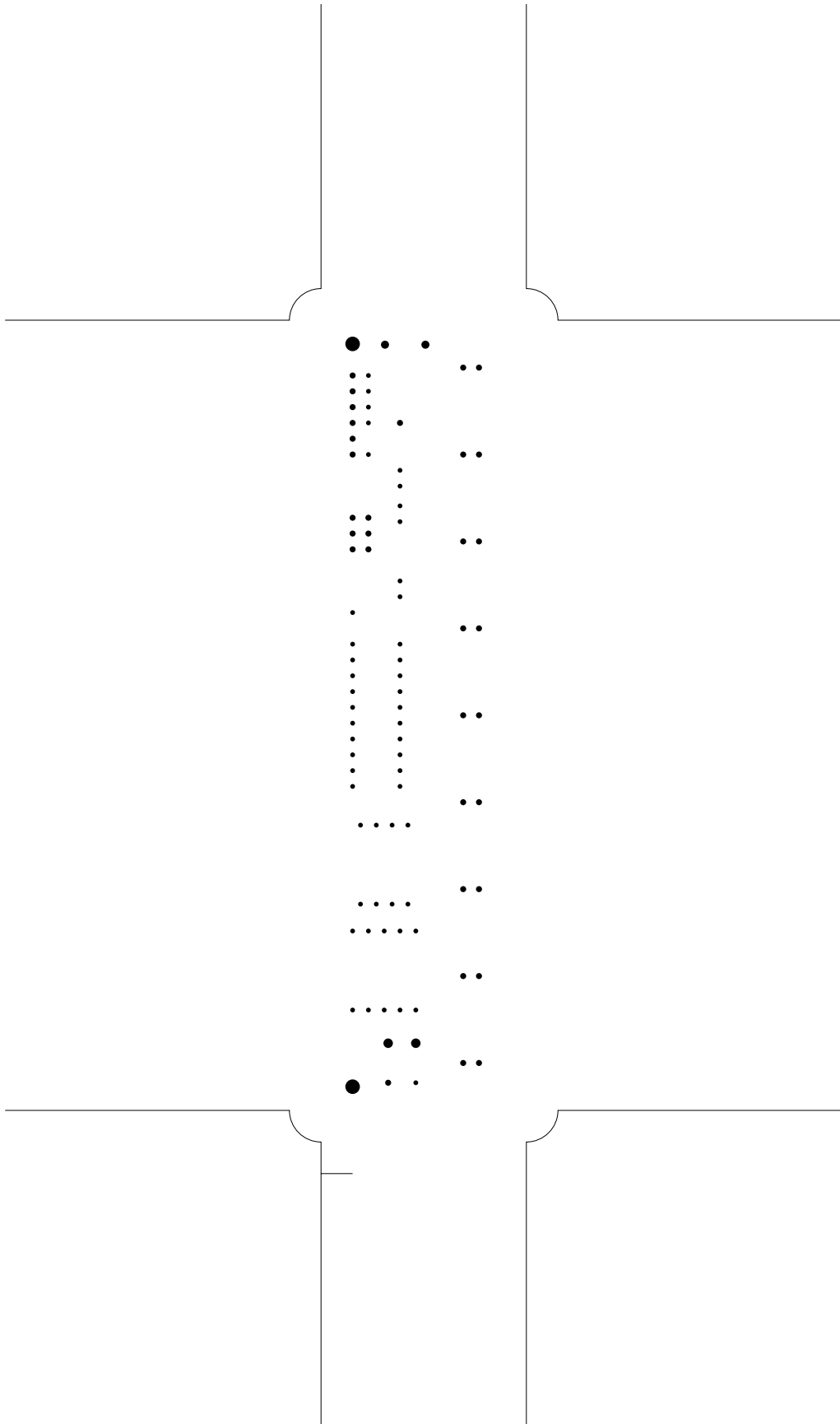


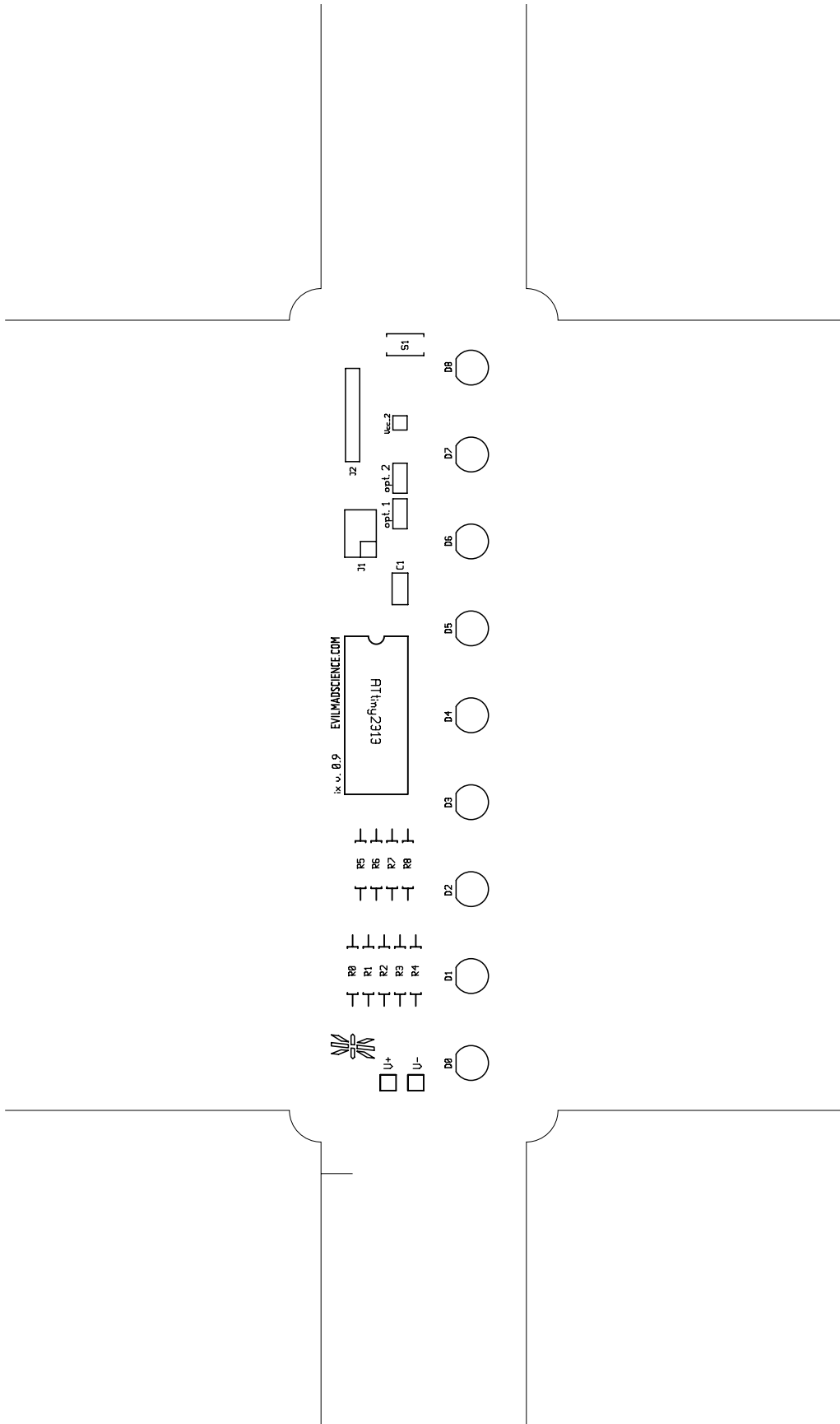


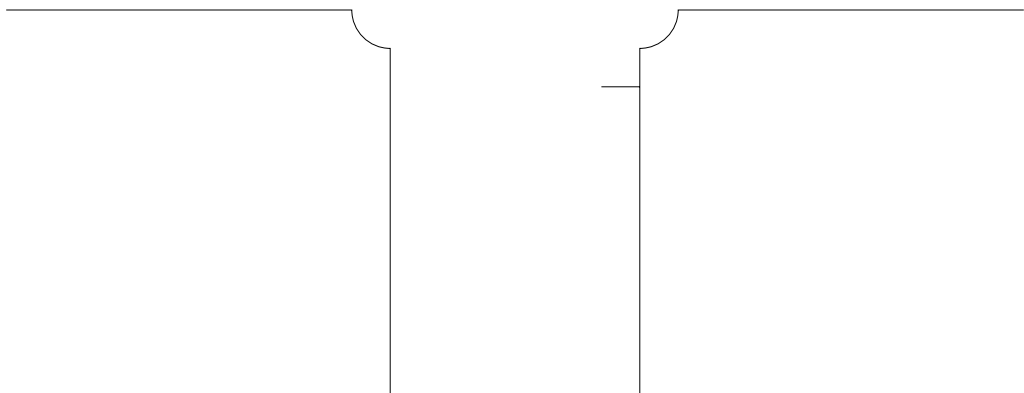
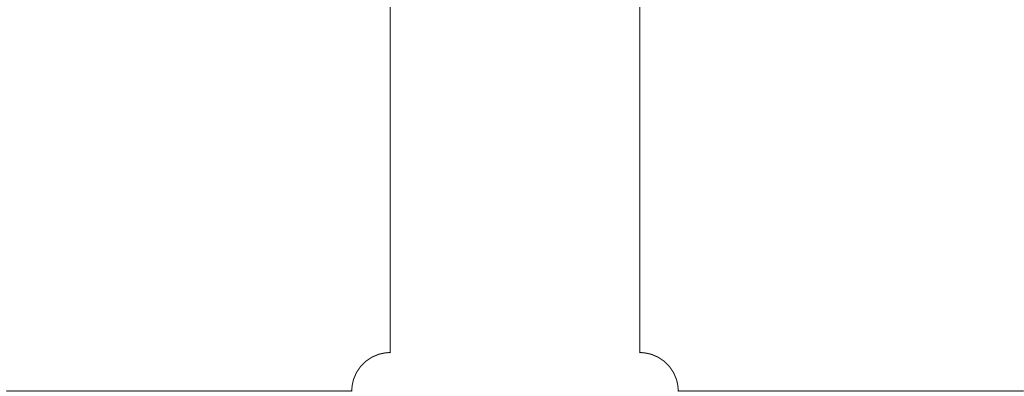


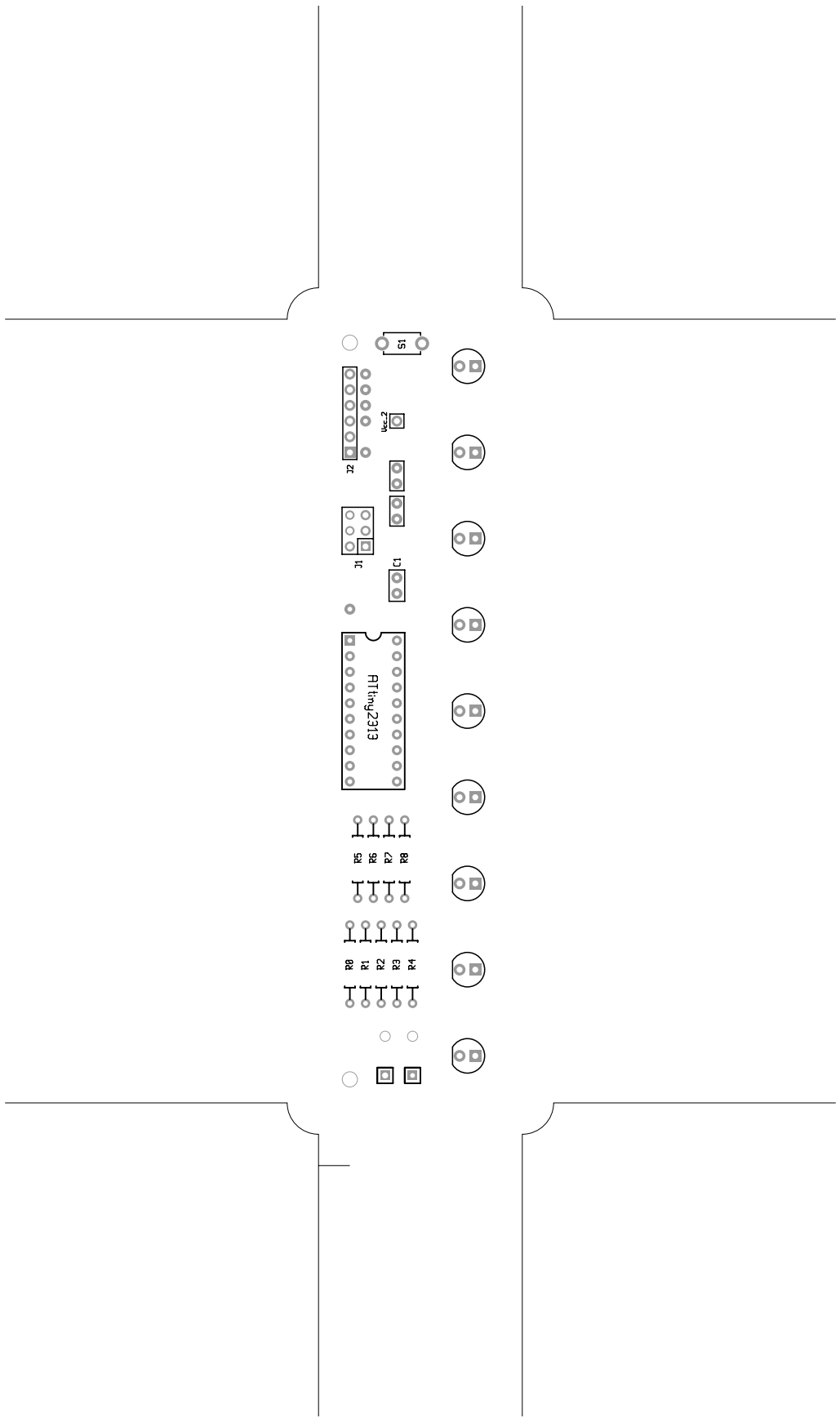


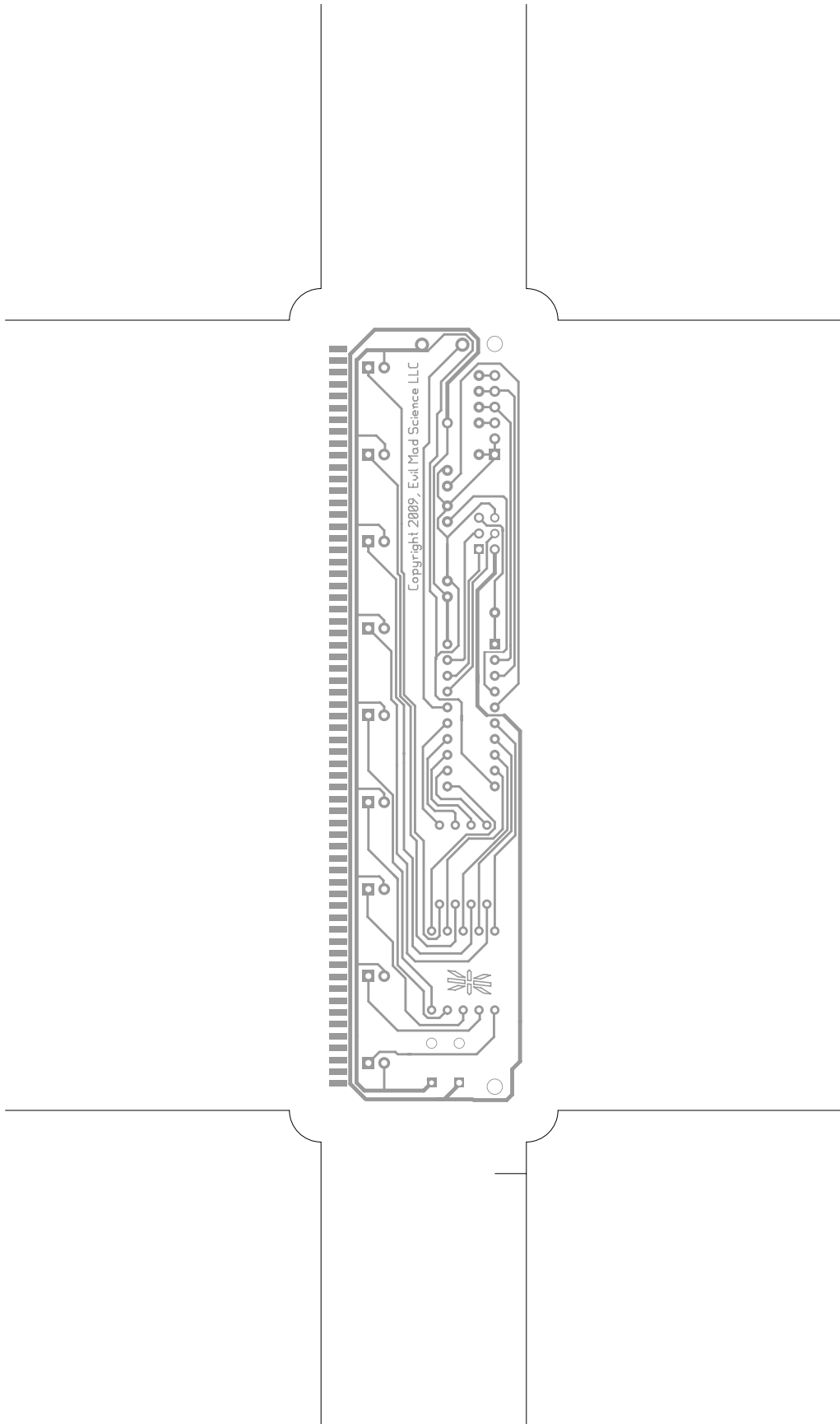








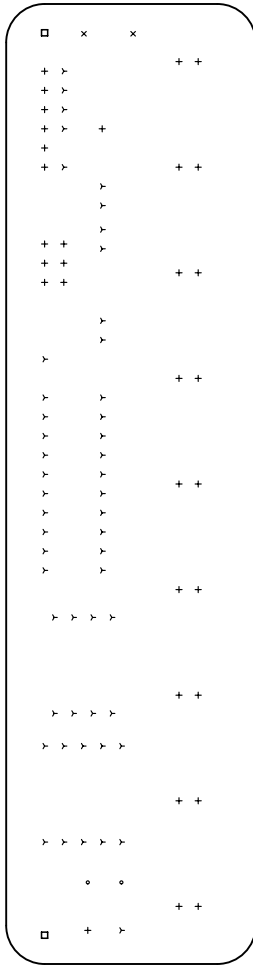




There are 5 different drill sizes used in this layout, 89 holes total.

Symbol	Diem. (Inch)	Count	Plated?
y	0.030	51	YES
+	0.038	32	YES
x	0.051	2	YES
o	0.060	2	YES
□	0.092	2	YES

Title: ix_revC - Fabrication Drawing
 Author: Mindell H. Oskey
 Date: Wed Sep 30 11:27:00 2009 UTC



Board outline is the centerline of this path